

Radisson  
Hotel  
Narita

## NARITA JAPAN



Located 20 minutes drive away from Narita International Airport in a resort setting, the Radisson Hotel Narita offers warm hospitality, inviting atmosphere and friendly services sure to please business and leisure travelers alike.

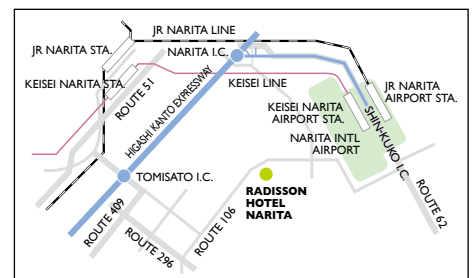
### Facilities and Services:

- 490 rooms spacious guestrooms within an international hotel environment
- All guestrooms are equipped with large western style bedding and comforters, high speed broadband Internet access, 24-hour English speaking internet support help desk, remote in-room printing solution, 8 English cable TV channels, DVD players, mini refrigerator, coffee and tea maker, Iron and iron board and windows that can open
- In-house team building services
- Off-site catering options
- Local tours of Narita-san temple and other cultural sites
- Golf tours
- Translation and secretarial services
- 24-hour business center
- 24-hour gymnasium
- Tennis courts
- Indoor heated pool, outdoor pool
- One hole golf range- ( par 3 – 80m / 100 yds)
- Same day laundry service

### Location:

The Radisson Hotel Narita is conveniently located with easy access to:

- Narita International Airport (15 – 20 minutes), Narita City (10 – 15 minutes), Tokyo (1 hour – 1.5 hour)
- Daily complimentary round trip shuttle bus services to Narita International Airport, Narita City, the home of Narita-san temple. The hotel can assist with daily transfers to Tokyo Haneda domestic Airport. Tokyo highway bus between Tokyo central station and the hotel 16 times a day



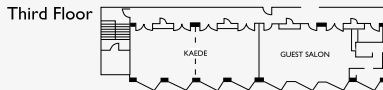
650-35, Nanae Tomisato-Shi  
CHIBA 286-0221 JAPAN  
Telephone: 81-476-93-1234  
Fax: 81-476-93-4834  
[www.radisson.com/tokyojp\\_narita](http://www.radisson.com/tokyojp_narita)

**Radisson®**

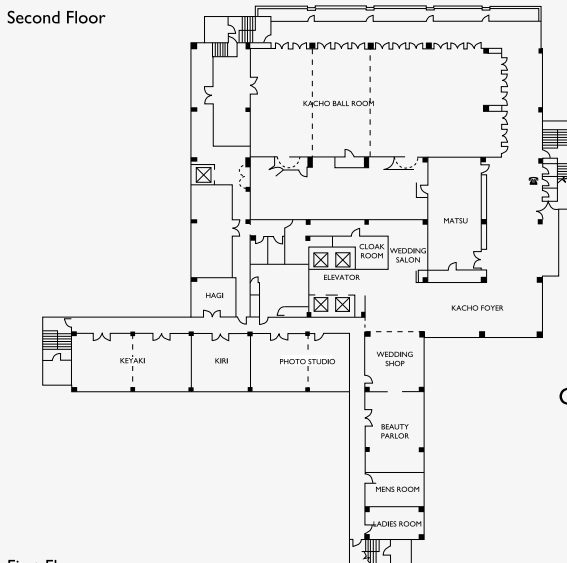
Radisson  
Hotel  
Narita

# NARITA JAPAN

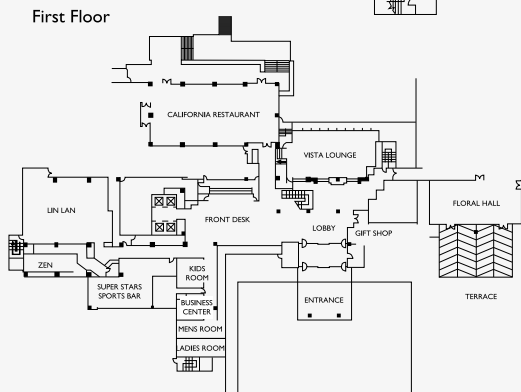
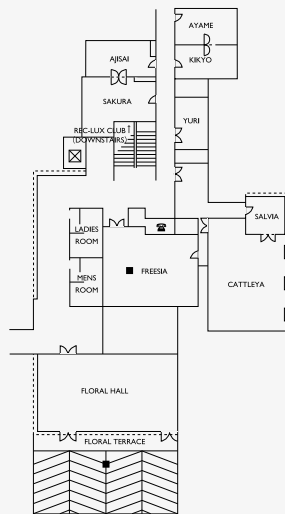
| Floor  | Meeting Room   | Dimensions (m) | Area (m <sup>2</sup> ) | Theatre | Classroom | U-shape | Banquet | Reception |
|--------|----------------|----------------|------------------------|---------|-----------|---------|---------|-----------|
| First  | Floral Hall    | 19 × 9         | 175                    | 200     | 100       | 34      | 90      | 150       |
|        | Freesia        | 10.5×8         | 86                     | 70      | 40        | 18      | 40      | 50        |
|        | Sakura         | 6.7×5          | 40                     | 30      | 15        | 10      | 16      | 25        |
|        | Ajisai         | 6.7×3.7        | 27                     | 20      | 12        | 10      | 10      | 15        |
|        | Kikyo          | 6.1×3.9        | 25                     | 20      | 12        | 10      | 10      | 10        |
|        | Ayame          | 6.1×3.9        | 21                     | 15      | 10        | 10      | 10      | 10        |
|        | Yuri           | 5.5×3.5        | 19                     | 15      | 10        | —       | 10      | 10        |
|        | Salvia         | 6×6            | 36                     | 25      | 18        | 12      | 12      | 20        |
| Second | Cattleya       | 13×9           | 117                    | 120     | 70        | 26      | 60      | 100       |
|        | Kacho Ballroom | 28×12          | 335                    | 400     | 234       | 64      | 240     | 300       |
|        | (3/4)          | 21×12          | 250                    | 300     | 170       | 44      | 120     | 200       |
|        | (1/2)          | 14×12          | 165                    | 160     | 90        | 30      | 80      | 120       |
|        | Hagi           | 5×5            | 25                     | 24      | 12        | 6       | 12      | —         |
|        | Kiri           | 6.5×6.3        | 45                     | 40      | 18        | 12      | 16      | 20        |
| Third  | Keyaki         | 13.5×6.3       | 90                     | 80      | 40        | 20      | 40      | 50        |
|        | (1/2)          | 6.5×6.3        | 45                     | 40      | 20        | 12      | 20      | 25        |
| Third  | Guest Salon    | 9.5×6          | 63                     | —       | —         | 12      | 24      | 30        |
|        | Kaede          | 13.5×6         | 90                     | 80      | 40        | 20      | 40      | 50        |



TOWER WING



GARDEN WING



## Restaurants and Bars:

**California Restaurant:** Offers all day contemporary dining and a pleasant view of the beautiful gardens and outdoor swimming pool. In a truly relaxing dining environment, our menus are specially designed to provide you with the nourishment required to continue your travels and get the most of your day.

**Super Stars Sports Bar:** Catch the live sports action from all around the world, or just sit back in the beer garden and enjoy time with friends after a busy day of travel or work. The menu has a wide range of imported beverages and pub snacks.

**Vista Lounge:** The view from our lounge bar is sensational and a full selection of snacks, coffee, tea and beverages is available. A great place to meet with colleagues and friends or to surf the Internet with wireless access.

## Meeting and Banquets:

The Radisson Hotel Narita is the perfect site for your meeting, conference, product introduction, or seminar with state-of-the-art facilities and Radisson Meeting Solutions<sup>SM</sup> – our exclusive, comprehensive meeting program.

- 17 meeting rooms with over 11,200 square feet of flexible meeting space
- Extensive in-house audiovisual facilities
- High speed broadband internet access in all meeting rooms
- Wireless Internet access in hotel public areas

## RESERVATION WORLDWIDE

[www.radisson.com](http://www.radisson.com)

Toll Free 00531-65-3648 (Japan)

1800-333-333 (Australia)

1800-333-3333 (USA)

or call your travel professional

650-35, NanaeTomisato-Shi  
CHIBA 286-0221 JAPAN  
Telephone: 81-476-93-1234  
Fax: 81-476-93-4834  
[www.radisson.com/tokyojp\\_narita](http://www.radisson.com/tokyojp_narita)