



Hotel features:

Radisson Exhibition Center Shanghai is located in Hongqiao's Huaxin Town, within immediate vicinity of the National Exhibition and Convention Centre Shanghai and nearby to Hongqiao transportation hub. The hotel features 226 stylish guest rooms and suites that provide an unforgettable Radisson experience. Each room offers resplendent comfort and a well-designed workspace that will exceed expectations. Our Oasis Lounge, River View Café and Fortune Court is warm and welcoming, while the fitness center with indoor swimming pool offers the ideal place to exercise. For those with business and events needs we offer over 1,200 square meters of versatile space, including a pillar-less grand ballroom, 4 separate meeting rooms and 1 boardroom. With our "Yes, I Can" service philosophy, Radisson Exhibition Center Shanghai promises perfection in meeting all your business and leisure travel needs.

Guest room amenities:

- 226 guest rooms and suites
- Spacious work station with desk
- Complimentary Wifi and wired internet
- 42-inch flat-screen television
- Convenient, comfortable bed control panels
- Multi-functional charger

Meeting facilities and services:

- Over 1,200 square meters of meeting space
- 1 ballroom and 4 function rooms
- Complimentary Wifi and wired internet
- Complete catering and convention services available
- Creative catering and theme party capabilities

Local attractions:

- | | |
|----------------------------------|-------|
| • Bailian Outlets Plaza | 10 km |
| • Mega Mills | 10 km |
| • Shanghai International Circuit | 19 km |
| • Qingpu Museum | 24 km |
| • Zhujiajiao Town | 30 km |
| • Oriental Land | 32 km |

To find out more, visit Radisson.cn

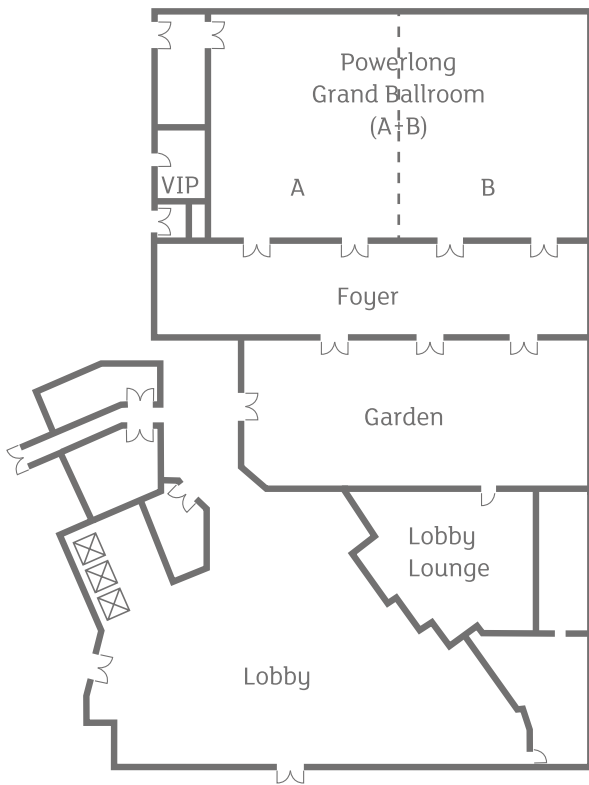
Radisson Exhibition Center Shanghai
No.1550 Xinfu Middle Road
Qingpu District, 201708 Shanghai, P.R.China

+86 21 6700 1111
Radisson.com/shanghai-exhibition

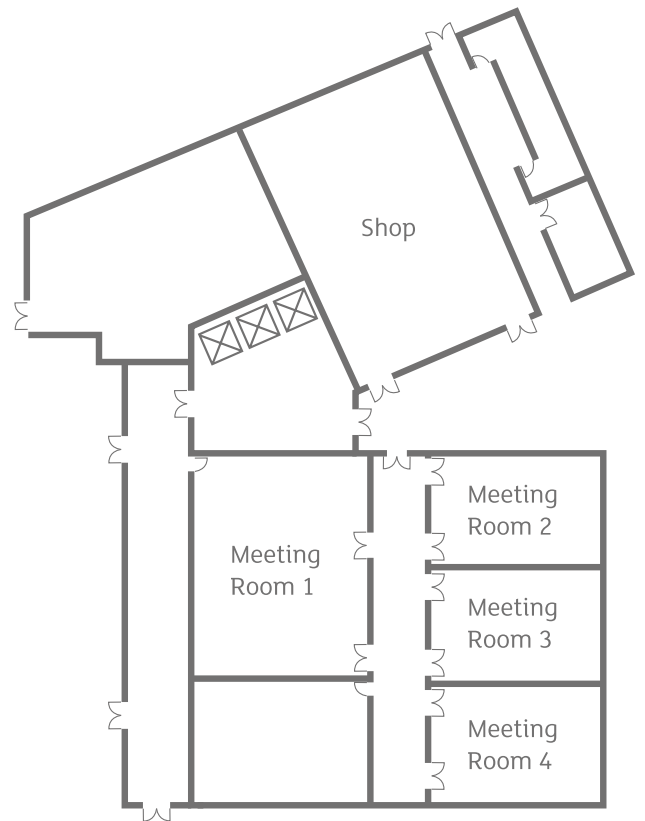
Radisson Ballroom

Room dimensions and seating capacity

Room Name	Area (m ²)	Dim.(m)	Ceiling Height(m)	Theatre	Conference	Banquet	Classroom	U-Shape	Hollow Square	Cocktail	Half Rounds	Herring bone	T-Shape	VIP Seating
Powerlong Grand Ballroom(A+B)	608	32.18 x 18.9	7.25	500	460	400	350	160	80	600	200	150	160	80
Powerlong Grand Ballroom A	304	16.09 x 18.9	7.25	250	220	190	180	80	40	300	100	70	80	40
Powerlong Grand Ballroom B	304	16.09 x 18.9	7.25	250	220	190	180	80	40	300	100	70	80	40
Meeting Room 1	200	16 x 12.5	3.8	150	120	120	120	60	30	200	60	70	60	30
Meeting Room 2	98	12 x 8.2	2.6	80	60	60	50	30	20	90	30	30	30	15
Meeting Room 3	98	12 x 8.2	2.6	80	60	60	50	30	20	90	30	30	30	15
Meeting Room 4	98	12 x 8.2	2.6	80	60	60	50	30	20	90	30	30	30	15
VIP Room	20	4.5 x 4.5	3	-	-	-	-	-	-	-	-	-	-	8
Foyer	338	40 x 8.45	3.5	-	-	200	-	-	-	300	100	-	-	-



1st Level



Basement Level